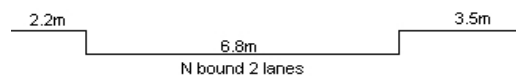
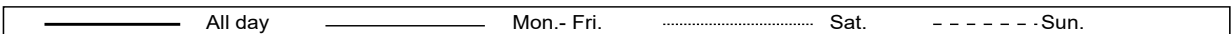
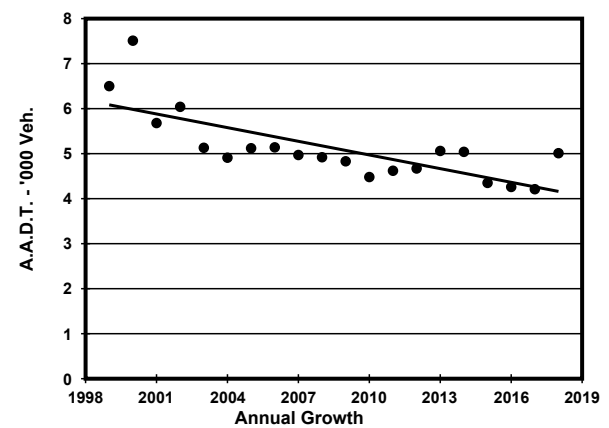
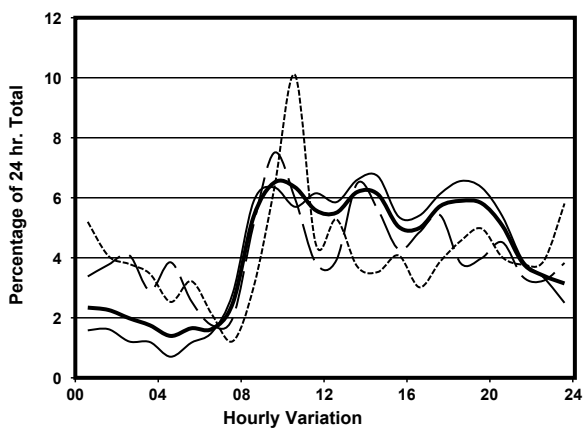
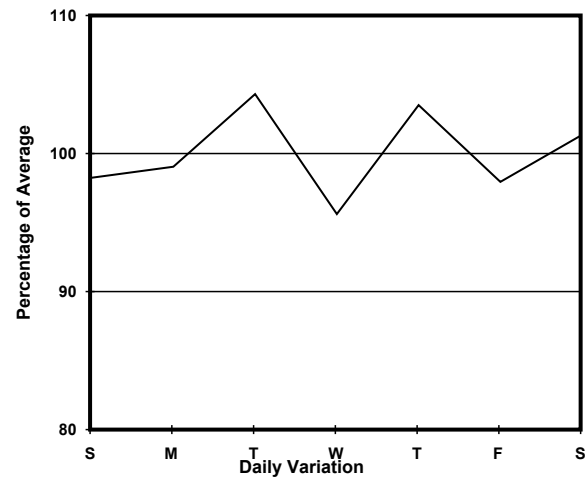
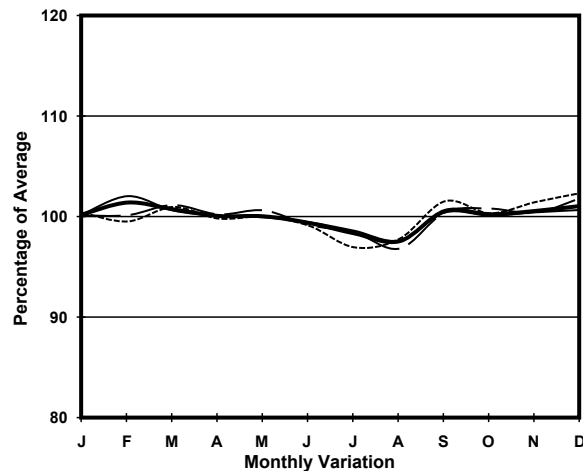


YEAR 2018  
 COVERAGE (B) STATION 2210  
 ROAD NETWORK MAJOR  
 ROAD TYPE DISTRICT DISTRIBUTOR

LINK WYNDHAM ST (from QUEEN'S RD C to LOWER ALBERT RD)



## 1. TRAFFIC FLOW VARIATION AND GROWTH



## 2. TRAFFIC CHARACTERISTICS (BY DIRECTION)

Parameter	All - Day	Mon. - Fri.	Sat.	Sun.
<b>NORTH BOUND</b>				
A.A.D.T.	5010	5020	5090	4930
R 12 / 24 - %	65.8	69.5	58.8	53.2
R 16 / 24 - %	83.9	88.5	73.9	69.8
AM Peak Hour	0900-1000	0900-1000	0900-1000	0900-1000
One-way flow at AM peak hour	330	320	380	310
T - % (AM)	-	1.4	-	-
PM Peak Hour	1800-1900	1800-1900	1700-1800	1800-1900
One-way flow at PM peak hour	300	330	280	230
T - % (PM)	-	-	-	-
Prop.of commercial vehicles - 16 hr.	-	0.6	-	-
 A.A.D.T.	-	-	-	-
R 12 / 24 - %	-	-	-	-
R 16 / 24 - %	-	-	-	-
AM Peak Hour	-	-	-	-
One-way flow at AM peak hour	-	-	-	-
T - % (AM)	-	-	-	-
PM Peak Hour	-	-	-	-
One-way flow at PM peak hour	-	-	-	-
T - % (PM)	-	-	-	-
Prop.of commercial vehicles - 16 hr.	-	-	-	-

## 3. OTHER INFORMATION AND COMMENT

**Coverage (B) Station 2210**  
**Year 2018**

**4. Vehicle classification and occupancy - Monday to Friday**

Time		Class of vehicle									
		Motor Cycle	Private Car	Taxi	Private LB	PLB	Goods veh.		Non Fr. Bus	Fr. Bus	
							Light	M & H		SD	DD
0700-0800	Pro	9.8	14.6	58.5	0.0	0.0	14.6	2.4	0.0	0.0	0.0
	Ocp	1.0	1.5	1.9	0.0	0.0	1.5	1.0	0.0	0.0	0.0
0800-0900	Pro	12.7	40.0	34.5	0.0	0.0	9.1	3.6	0.0	0.0	0.0
	Ocp	1.0	1.7	1.9	0.0	0.0	1.6	2.0	0.0	0.0	0.0
0900-1000	Pro	10.0	51.4	31.4	0.0	0.0	5.7	1.4	0.0	0.0	0.0
	Ocp	1.0	1.9	2.0	0.0	0.0	1.5	1.0	0.0	0.0	0.0
1000-1100	Pro	3.3	45.9	26.2	0.0	0.0	23.0	1.6	0.0	0.0	0.0
	Ocp	1.0	1.9	2.1	0.0	0.0	1.7	1.0	0.0	0.0	0.0
1100-1200	Pro	12.3	49.1	31.6	0.0	0.0	7.0	0.0	0.0	0.0	0.0
	Ocp	1.0	1.4	2.2	0.0	0.0	1.5	0.0	0.0	0.0	0.0
1200-1300	Pro	17.3	53.8	25.0	0.0	0.0	3.8	0.0	0.0	0.0	0.0
	Ocp	1.1	1.6	1.7	0.0	0.0	1.0	0.0	0.0	0.0	0.0
1300-1400	Pro	8.2	44.9	38.8	0.0	0.0	8.2	0.0	0.0	0.0	0.0
	Ocp	1.0	1.5	2.2	0.0	0.0	1.8	0.0	0.0	0.0	0.0
1400-1500 Peak hour	Pro	6.5	58.1	24.2	1.6	0.0	9.7	0.0	0.0	0.0	0.0
	Ocp	1.0	1.4	2.2	1.0	0.0	1.5	0.0	0.0	0.0	0.0
1500-1600	Pro	1.7	62.1	22.4	0.0	0.0	13.8	0.0	0.0	0.0	0.0
	Ocp	1.0	1.6	1.6	0.0	0.0	1.3	0.0	0.0	0.0	0.0
1600-1700	Pro	3.9	72.6	11.8	0.0	0.0	11.8	0.0	0.0	0.0	0.0
	Ocp	1.0	1.7	2.0	0.0	0.0	1.2	0.0	0.0	0.0	0.0
1700-1800	Pro	0.0	72.9	14.6	0.0	0.0	12.5	0.0	0.0	0.0	0.0
	Ocp	0.0	1.5	2.0	0.0	0.0	2.2	0.0	0.0	0.0	0.0
1800-1900	Pro	8.8	42.6	41.2	0.0	0.0	7.4	0.0	0.0	0.0	0.0
	Ocp	1.0	1.7	1.7	0.0	0.0	1.6	0.0	0.0	0.0	0.0
1900-2000	Pro	3.6	56.6	34.9	0.0	0.0	4.8	0.0	0.0	0.0	0.0
	Ocp	1.0	1.6	1.6	0.0	0.0	1.3	0.0	0.0	0.0	0.0
2000-2100	Pro	9.6	39.8	49.4	0.0	0.0	1.2	0.0	0.0	0.0	0.0
	Ocp	1.0	1.7	1.5	0.0	0.0	1.0	0.0	0.0	0.0	0.0
2100-2200	Pro	5.8	32.7	59.6	0.0	0.0	0.0	1.9	0.0	0.0	0.0
	Ocp	1.0	1.4	1.4	0.0	0.0	0.0	1.0	0.0	0.0	0.0
2200-2300	Pro	5.6	30.6	58.3	0.0	0.0	5.6	0.0	0.0	0.0	0.0
	Ocp	1.0	1.3	1.7	0.0	0.0	1.0	0.0	0.0	0.0	0.0
16 hours	Pro	7.5	48.7	34.8	0.1	0.0	8.3	0.6	0.0	0.0	0.0
	Ocp	1.0	1.6	1.8	1.0	0.0	1.5	1.3	0.0	0.0	0.0

**Legend**

**Pro.** Proportion of vehicles in % (Sum may not add up to 100% due to figure rounding)\*

**Ocp.** Average occupancy of vehicles including both driver and passengers\*

**M&H** Medium and Heavy

**\*** All traffic data are collected from combined bounds except for one way traffic